

The Mount – Development of Budget hotel by the Cathedral

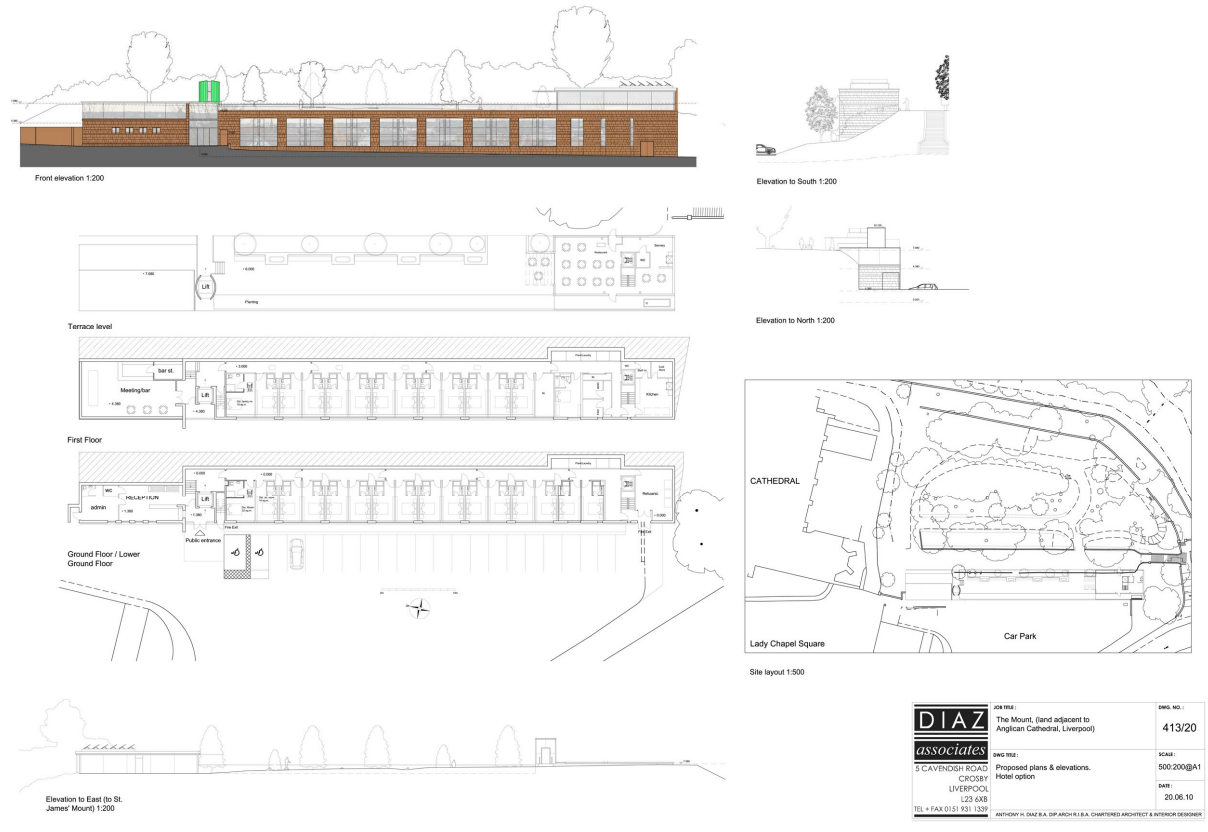
Liverpool, England

Creating a new build budget hotel with around 50 keys within the Cathedral grounds as part of a number of initiatives and substantial activities leading up to 2024, the 100th Anniversary of the Consecration of the Cathedral.



HotelAdvice was initially brought in to carry out feasibility work with a financial appraisal, which from the outset was not looking good. Together with HoteAdvice architectural partners a new scheme was presented with a larger room count and less public areas which would be operationally much more efficient and improved feasibility accordingly. The scheme created was more in line with the client segment demand in the particular area of Liverpool and with the proposed hotel development.

With a cost report from Todd and Ledson, financial performance projections and assumptions, the new development plans were completed to the satisfaction of the client.



A Heritage Lottery Fund bid is being prepared for this historic St James Park, the garden area to the rear of where the hotel would be, which probably will see it upgraded. The area will be the focus of activities such as Weddings, linked to the Cathedral, so great relationship with the hotel. This area was part of Kirby John's hunting park.

Realisation of funds from a site sale of the Mount site, are being built into the £20.24m budget for leading up to the 2024 celebrations. Further information will be provided as the project moves along.

